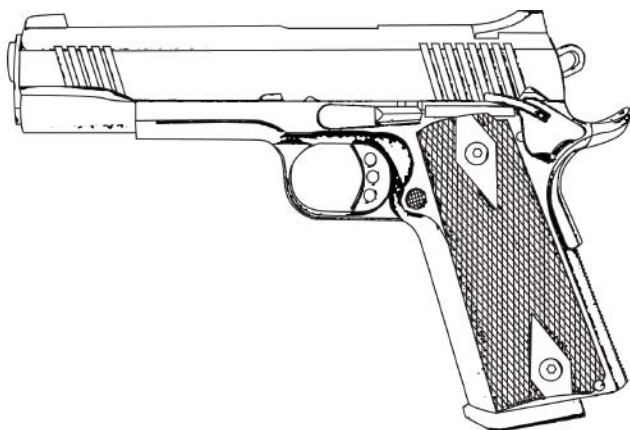




OPERATOR'S MANUAL



1911 MARK PTP SERIES

TABLE OF CONTENTS

Use of this manual2

Safety Guidelines 2-3

Warranty and Service 4-5

Specifications 6-9

Contents10

Functions and Features10

Charging Gas 11

Loading BBs12

Loading Magazine13

Safety13

Cocking.....13

Shooting14

Open Slide15

After Shooting.....15

Hop-Up System16

Hop-Up Adjustment Point17

Disassembly18

Assembly18

Troubleshooting19

General Maintenance20

Operating Under Unusual Conditions.....20

Diagrams and Parts Lists 21-33

USE OF THIS MANUAL

Before operating the Airsoft gun, read this manual in its entirety. Important safety topics and tips are discussed throughout all of the chapters. It's important that the operator know the principles of gun handling safety and operation prior to firing the Airsoft gun.

SAFETY GUIDELINES



WARNING! Failure to follow safety guidelines may result in serious injury.

Safety Distance

The effective shooting range is approximately 75 feet. BBs fired from this Airsoft gun may travel further than intended. Make certain that you have an adequate backstop.

Eye Protection

Eye protection should be worn at all times when both shooting and maintaining your Airsoft gun. Protect your eyes from silicone spray and BBs under spring pressure while performing maintenance on your Airsoft gun.

Assume Every Gun is Always Loaded

Until you are certain the chamber is empty, treat every gun as if it were loaded. Do not assume the chamber is empty based on your memory or someone else's words. Always remove the magazine and visually check to confirm the chamber is empty.

Beware of Barrel Obstructions

Ensure the Airsoft gun barrel is free of obstructions before you fire the gun. Even the smallest obstruction such as dirt, dust or a stuck cleaning patch can cause a jam, misfire or malfunction.

Muzzle Control

Always keep the muzzle of the gun pointed in a safe direction. Never point the muzzle at a person or object that you do not intend to shoot.

Keep Your Safety On

Keep the gun's safety on until your sights are aligned on your target and you are ready to fire.

Keep Your Finger Off The Trigger

Keep your finger off the trigger and out of the trigger guard until your sights are aligned on your target and you are ready to fire.



WARNING! Airsoft BBs can be a choking hazard. Keep them away from children.

SAFETY GUIDELINES

Identify Your Target and Backstop

Before you pull the trigger, make certain of your target and what is beyond it. The Airsoft gun should never be fired at surfaces such as rocks, glass, water, or other hard surfaces where BBs are likely to ricochet in unpredictable directions.



WARNING! Adult supervision is required for any person under the age of 18.

Failure To Fire

If the Airsoft gun fails to fire, misfires, or malfunctions, do not look into the gun barrel. BBs can become lodged into the chamber, and serious eye injury may occur.

Maintain Your Gun Properly

Performing proper maintenance, as outlined in this manual, ensures that your Airsoft gun will be safe to shoot and will perform to its designed specifications for many years. Alterations, modifications or adjustments may damage your Airsoft gun, make it unsafe to shoot, and will void all warranty claims.

Store Your Gun Safely

Always store the Airsoft gun in a safe place, and out of the reach of children. Always transport the Airsoft gun in a carrying case. Never display the Airsoft gun in a public place. Keep the safety engaged, and remove the magazine before storing the Airsoft gun.

NOTE: IT IS YOUR RESPONSIBILITY TO TAKE EVERY REASONABLE PRECAUTION TO ENSURE THE SAFE STORAGE AND TRANSPORTATION OF YOUR AIRSOFT GUN.

Orange Tip

The orange tip on Airsoft guns helps Law Enforcement distinguish between the replica guns from their real firearm counterparts. Altering the coloration or markings required by state or Federal law so as to make the product look more like a firearm is dangerous and may be a crime. Operator assumes all risks and responsibility when doing so.

Hazards of Being Mistaken for a Real Firearm

Airsoft guns have been mistaken by Police and Law Enforcement as real firearms. A confrontation with law enforcement while carrying an Airsoft gun can result in serious injury or even death. It is strongly advised to operate the Airsoft gun at a safe and legal location. In the event that you are approached by Law Enforcement personnel, you must comply with their instructions immediately to avoid an incident.

Alcohol, Medications and Drugs

Do not handle or operate your Airsoft gun while under the influence of alcohol, medication or drugs.

Your Responsibility

Your Airsoft gun is well-engineered and manufactured to the highest standards. It was carefully inspected before it was packaged and shipped from our factory. Its safe use depends on you alone. You are the ultimate safety device. Like many other devices, your Airsoft gun is safe unless handled in an irresponsible or uneducated manner.

WARRANTY AND SERVICE

KWA Performance Industries, Inc. is committed to serve our customers with the finest quality products and the highest level of service and customer satisfaction. Therefore, all KWA products imported and distributed by KWA Performance Industries, Inc. come with a 45-day warranty.

WARRANTY AND SERVICE

KWA Performance Industries, Inc. is committed to serve our customers with the finest quality products, the highest level of service, and customer satisfaction. Because of this, we offer a 45-day warranty on all KWA products we import and distribute.

What is Covered

Except as specified below, this warranty covers all defects in material and workmanship in KWA products occurring during the above warranty periods. The following are not covered by the warranty: (1) Any product which is not imported and distributed in the U.S.A. by KWA PERFORMANCE INDUSTRIES, INC. (2) Any products not purchased in the U.S.A. from an KWA AUTHORIZED RESELLER (Note: KWA AUTHORIZED RESELLER can be identified by KWA AUTHORIZED RESELLER sticker displayed in the store. If you are uncertain as to whether a dealer is a KWA AUTHORIZED RESELLER, please contact KWA PERFORMANCE INDUSTRIES, INC. as listed above). (3) Damaged deterioration or malfunction resulting from: a) Accident, act of nature, abuse, misuse, neglect, unauthorized product repair, opening of or modification or failure to follow instructions supplied with the product. b) Repair or attempted repair by anyone not authorized by KWA PERFORMANCE INDUSTRIES, INC. c) Removal of the orange safety tip. (4) Use of the product outside the U.S.A. (5) Damaged batteries or improper use of bullets (BBs), or non approved propellants (ie. Propane, Red Gas, 134a...etc.) (6) Use in industrial, commercial, and/or professional applications.

What KWA Will Pay For

If during the applicable warranty period from the date of the original purchase your KWA product is found to be defective by KWA Performance Industries, Inc., KWA Performance Industries, Inc. will repair, or at its option, replace with new, used, or equivalent model, the defective product without charge for parts or labor.

How To Obtain Warranty Service

If your product needs service, it may be taken or shipped to KWA Performance Industries, Inc. The following procedures apply whenever your unit must be transported for warranty service:

- You must go to Help Desk at www.kwausa.com/support to obtain an RMA number. THE RMA NUMBER MUST BE CLEARLY MARKED ON THE OUTSIDE OF THE PACKAGE. PACKAGES WITHOUT AN RMA NUMBER CLEARLY MARKED WILL BE REFUSED AND RETURNED TO THE SENDER.
- You are responsible for transporting your unit or arranging for its transportation.
- If shipment of your unit is required; you must pay the initial shipping fee, but we will pay the return shipping charge if the repairs are covered by the warranty.

- WHEN RETURNING YOUR UNIT FOR WARRANTY SERVICE, A COPY OF THE ORIGINAL SALES RECEIPT MUST BE ATTACHED.
- You must include the following: RMA number, your name, address, daytime telephone number, model and serial number (if applicable) of the product and a description of the problem.

NOTE: THE RMA NUMBER MUST BE CLEARLY MARKED ON THE OUTSIDE OF THE PACKAGE. PACKAGES WITHOUT AN RMA NUMBER CLEARLY MARKED WILL BE REFUSED AND RETURNED TO SENDER. NO EXCEPTIONS.

This Warranty is Only Valid in the United States

If your product does not require service, but you have questions regarding its operation, please contact our Technical Services Department as listed below.

THIS WARRANTY IS EXPRESSLY MADE IN LIEU OF ALL OTHER WARRANTIES, EXPRESSED OR IMPLIED, INCLUDING WITHOUT LIMITATION, WARRANTIES OF MERCHANTABILITY AND FITNESS FOR A PARTICULAR PURPOSE.

OUR LIABILITY IS LIMITED TO THE REPAIR OR REPLACEMENT, AT OUR OPTION, OF ANY DEFECTIVE PRODUCT AND SHALL IN NO EVENT INCLUDE INCIDENTAL OR CONSEQUENTIAL COMMERCIAL OR PROPERTY DAMAGES OF ANY KIND. WE ARE NOT RESPONSIBLE FOR PRODUCTS LOST, STOLEN AND/OR DAMAGED DURING SHIPPING.

SOME STATES DO NOT ALLOW LIMITATIONS ON HOW LONG AND IMPLIED WARRANTY LASTS AND/OR DO NOT ALLOW THE EXCLUSION OF INCIDENTAL OR CONSEQUENTIAL DAMAGES, THE ABOVE LIMITATIONS AND EXCLUSIONS MAY NOT APPLY TO YOU.

This warranty gives you specific legal rights, but you may also have other rights which vary from state to state. This Warranty may not be altered other than in writing signed by an officer of KWA Performance Industries, Inc.

KWA Performance Industries, Inc.
18571 E. Gale Ave.
City of Industry, CA 91748-1339

626-581-1777
www.kwausa.com

SPECIFICATIONS

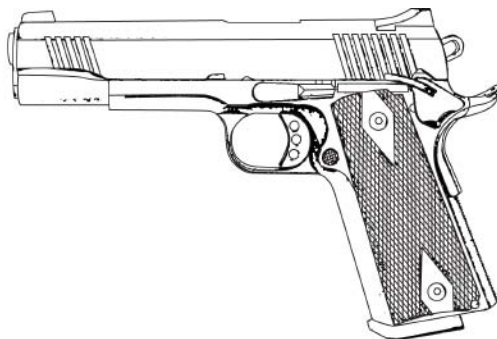
1911 MARK I

- Slide Material = Metal Alloy
- Frame Material = Metal Alloy
- Outer Barrel Material = High Impact Polymer
- Action = Single
- Propellant = Green Gas
- Overall Length = 22.22 cm (8.75")
- Overall Height = 15.24 cm (6")
- Inner Barrel Length = 115 mm
- Inner Barrel Diameter = 6.05 mm
- Weight = 1.01 kg (2.23 lbs)
- Caliber = 6 mm
- Magazine Capacity = 14 rounds
- Velocity = 104~107 MPS (340~350 FPS)
- Energy Output with .20g BB = 1.07 Joules
- Gas System = NS2
- Available Colors = Black

Special Features:

- Functional beavertail grip safety
- Front / Rear slide serrations
- Skeletonized hammer and trigger
- Combat sights
- Realistic construction and field stripping
- Adjustable Hop-Up

*Individual test results may vary depending on brand of BBs, type of gas, and chronograph used.



SPECIFICATIONS

1911 MARK II

- Slide Material = Metal Alloy
- Frame Material = Metal Alloy
- Outer Barrel Material = High Impact Polymer
- Action = Single
- Propellant = Green Gas
- Overall Length = 22.22 cm (8.75")
- Overall Height = 15.24 cm (6")
- Inner Barrel Length = 115 mm
- Inner Barrel Diameter = 6.05 mm
- Weight = 1.09 kg (2.4 lbs)
- Caliber = 6 mm
- Magazine Capacity = 14 rounds
- Velocity = 104~107 MPS (340~350 FPS)
- Energy Output with .20g BB = 1.07 Joules
- Gas System = NS2
- Available Colors = Black, Desert Tan

Special Features:

- Functional beavertail grip safety
- MIL-SPEC-1913 (Picatinny) rail
- Front / Rear slide serrations
- Ambidextrous thumb safety
- Skeletonized hammer and trigger
- Combat sights
- Realistic construction and field stripping
- Adjustable Hop-Up

*Individual test results may vary depending on brand of BBs, type of gas, and chronograph used.



SPECIFICATIONS

1911 MARK III

- Slide Material = Metal Alloy
- Frame Material = Metal Alloy
- Outer Barrel Material = High Impact Polymer
- Action = Single
- Propellant = Green Gas
- Overall Length = 22.22 cm (8.75")
- Overall Height = 15.24 cm (6")
- Inner Barrel Length = 115 mm
- Inner Barrel Diameter = 6.05 mm
- Weight = 1.01 kg (2.23 lbs)
- Caliber = 6 mm
- Magazine Capacity = 14 rounds
- Velocity = 104~107 MPS (340~350 FPS)
- Energy Output with .20g BB = 1.07 Joules
- Gas System = NS2
- Available Colors = Black

Special Features:

- Functional beavertail grip safety
- Front / Rear slide serrations
- Skeletonized hammer and trigger
- Combat sights
- Magazine well guide
- Realistic construction and field stripping
- Adjustable Hop-Up

*Individual test results may vary depending on brand of BBs, type of gas, and chronograph used.



SPECIFICATIONS

1911 MARK IV

- Slide Material = Metal Alloy
- Frame Material = Metal Alloy
- Outer Barrel Material = High Impact Polymer
- Action = Single
- Propellant = Green Gas
- Overall Length = 22.22 cm (8.75")
- Overall Height = 15.24 cm (6")
- Inner Barrel Length = 115 mm
- Inner Barrel Diameter = 6.05 mm
- Weight = 1.01 kg (2.23 lbs)
- Caliber = 6 mm
- Magazine Capacity = 14 rounds
- Velocity = 104~107 MPS (340~350 FPS)
- Energy Output with .20g BB = 1.07 Joules
- Gas System = NS2
- Available Colors = Black, OD Green

Special Features:

- Functional beavertail grip safety
- MIL-SPEC-1913 (Picatinny) rail
- Front / Rear slide serrations
- Ambidextrous thumb safety
- Combat sights
- Skeletonized hammer and trigger
- Magazine well guide
- Adjustable Hop-Up

*Individual test results may vary depending on brand of BBs, type of gas, and chronograph used.



CONTENTS

Product Package Contents

- 1 1911 Mark PTP Series Airsoft gun
- 1 Bottle of Silicone Oil
- 1 Magazine
- 1 Sample bag of Airsoft BBs
- 1 Hop-Up Adjustment Tool
- 1 Operator's Manual

FUNCTIONS AND FEATURES

1911 Mark Series with NS2 gas system

The 1911 Mark Series Airsoft guns are equipped with the new KWA NS2 internal gas delivery system, which increases performance and improves the overall reliability of the gun.

The NS2 gas system is a KWA-patented design that uses an advanced, light-weight composite gas piston with a two-stage internal expansion chamber that delivers the gas more efficiently than that of its predecessors. The NS2 design also increases the weapon cycle rate and provides for a crisp, realistic blow-back action.

Other parts of the Airsoft gun, including the recoil springs, recoil spring guide assembly, hop-up chamber, and magazine follower, have been improved, along with a new magazine that is milled from a solid alloy steel billet. This new construction strengthens the magazine's structural integrity and increases pressure carrying capacity. The magazine feed-lip has also been reinforced.

CHARGING GAS

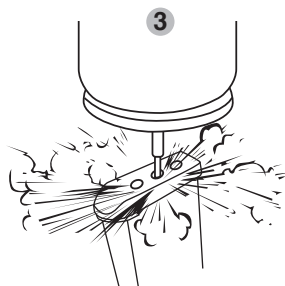
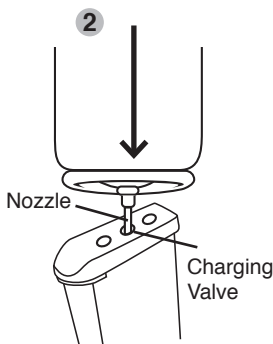
1. Release the magazine by pressing the magazine release button.
2. Push the gas canister nozzle into the charging valve. Make sure the canister is in a vertical position when charging.
3. Charge the magazine until gas overflows from the charging valve.



WARNING: Avoid dropping the magazine. Sudden impact with a hard surface may cause damage to the magazine.

Note: It is normal to have minor leaking from the charging valve during charging due to high pressure built up inside the magazine. It is recommended to keep the gas release valve slightly oiled. Room temperature is the ideal temperature for shooting. You may experience a delayed action if the surrounding temperature drops below 68° F.

Note: Do not expose the magazine to direct sunlight or incinerate the magazine, as this may cause the magazine to burst. It is strongly recommended to empty the gas from the magazine after shooting. Be certain that the gas does not make contact with eyes or skin while being released, as any contact will cause cold burns.



Green Gas safety tips:

- Check the canister for any cracks or leaks before using.
- Do not expose the canister to temperature over 104° F.
- Do not leave the canister directly over fire.
- Do not heat the canister.
- Keep the canister away from direct sunlight.
- Do not leave the canister in any type of vehicle.

LOADING BBs

1. Pull the magazine follower down until it locks.
2. Insert BBs into the magazine lip.
3. Make sure to have a 3mm clearance between BBs and the top lip of the magazine.
4. Push the magazine follower lock to release.

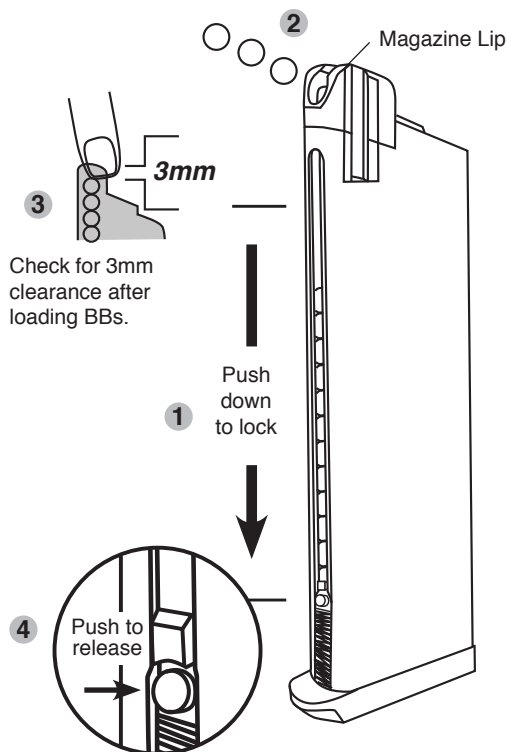


WARNING: Use only 6mm high grade BBs. Using low grade BBs will damage Airsoft gun.

NOTE: Use 0.25g or heavier BBs for better performance.

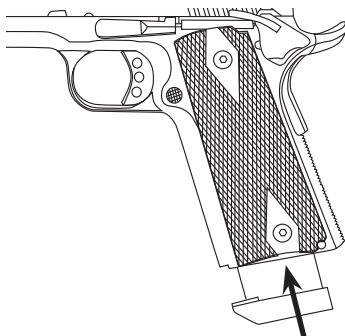


WARNING: Do not release the magazine follower when the magazine is empty. Doing so will damage the magazine and magazine follower.



LOADING MAGAZINE

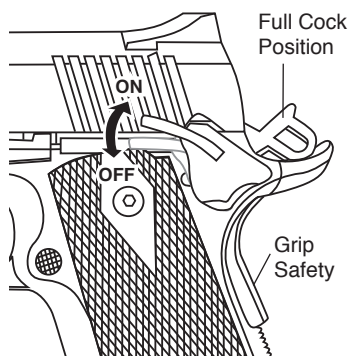
1. Place the magazine back into the magazine well.
2. Push the magazine up until it clicks into a locked position.
3. Pull the magazine down to assure that it has been locked in place.



SAFETY

To engage the Safety, push the safety lever upward. The gun is not ready to fire.
(UP = ON = NOT READY TO FIRE)

To disengage the Safety, push the safety lever downward. The gun is ready to fire.
(DOWN = OFF = READY TO FIRE)

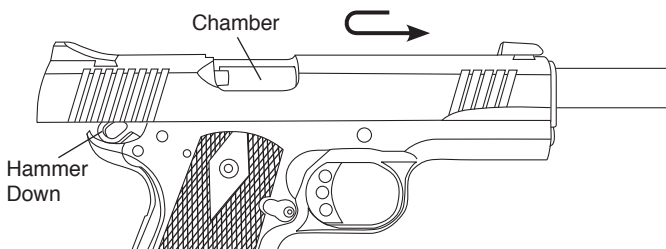


GRIP SAFETY

Grip safety is on at all times. To release grip safety, hold grip firmly and grip safety will be disengaged.

COCKING

Pull the slide to the rear-most position and release the slide. This will automatically load the BBs into the chamber. The hammer will be in a cocked position. Make sure not to skip this procedure. Skipping this step will cause a misfire on the first pull of the trigger. The slide will lock open when the last BB is fired.



SHOOTING

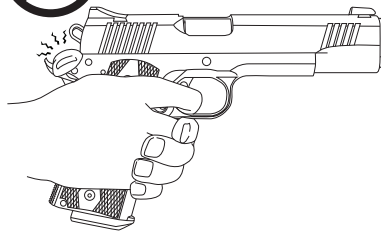
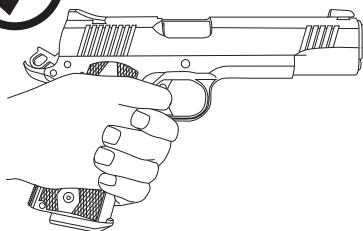
1. Make sure the gun is cocked.
2. Release safety and pull on trigger. The blow back action will load the following BBs automatically as the slide cycles back and forth.
3. Grasp Airsoft gun in your hand firmly. A two-hand hold with one hand wrapped around the other will help control the Airsoft gun.



WARNING: Never shoot gun in a horizontal or upside-down position.



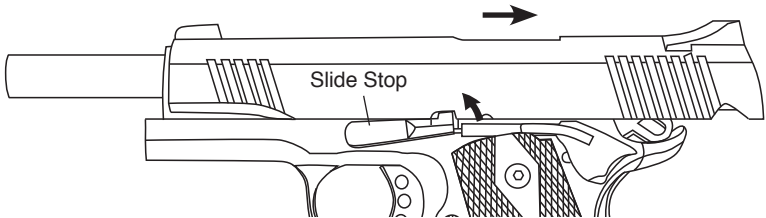
WARNING: Do not fire the pistol without a magazine inserted. Doing so may damage the impact block and result in the loss of the impact pin.



OPEN SLIDE

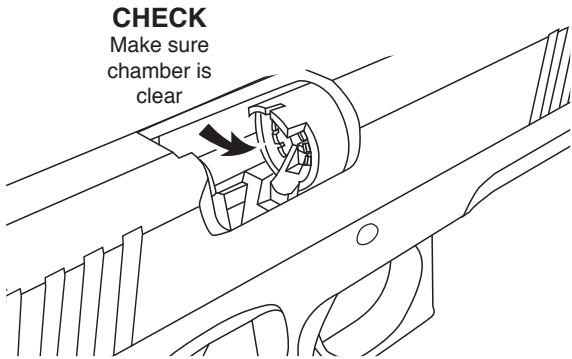
The slide will remain open after the last BB has been fired and ejected. Remove the empty magazine and replace it with a loaded magazine, then release the slide stop. The first BB will be automatically loaded into the chamber.

Note: It is important to treat your gun as if it were loaded even when the slide is open.



AFTER SHOOTING

After you are finished shooting, remove the magazine and visually examine the open chamber to check for clearance. Make sure both the magazine and the chamber are clear without BBs, **release the slide then engage the safety lever.**



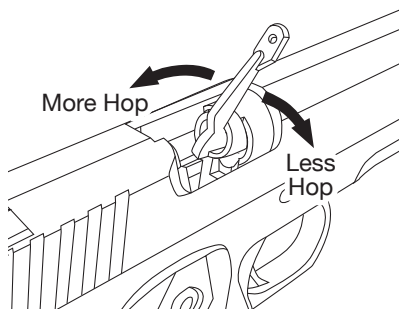
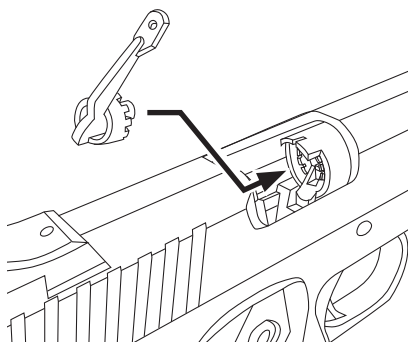
HOP-UP SYSTEM

The Hop-Up device is one of KWA's standard features, giving Airsoft BBs greater stability, further travel and consistency. Airsoft BBs are light-weight and can be affected by wind when fired. With the Hop-Up system, the trajectory of the Airsoft BBs can be adjusted according to the shooting environment or surroundings.











HOP-UP ADJUSTMENT

To adjust the Hop-Up, make sure the magazine is loaded and that you have at least 65 feet of clearance for a test fire before making any adjustments.

1. Test fire the gun for 10 to 20 rounds and observe the BB's traveling pattern.
2. Remove the magazine.
3. Open the slide and place adjusting tool into the slotted chamber ring. Turn the adjusting ring a 1/4-inch at a time.
4. If the BBs are dropping too quickly, move the adjusting ring to the left or counter-clockwise to give the BB more hop. If the BBs are dropping too slowly, move the adjusting ring to the right or clock-wise.
5. Test fire and adjust as needed.



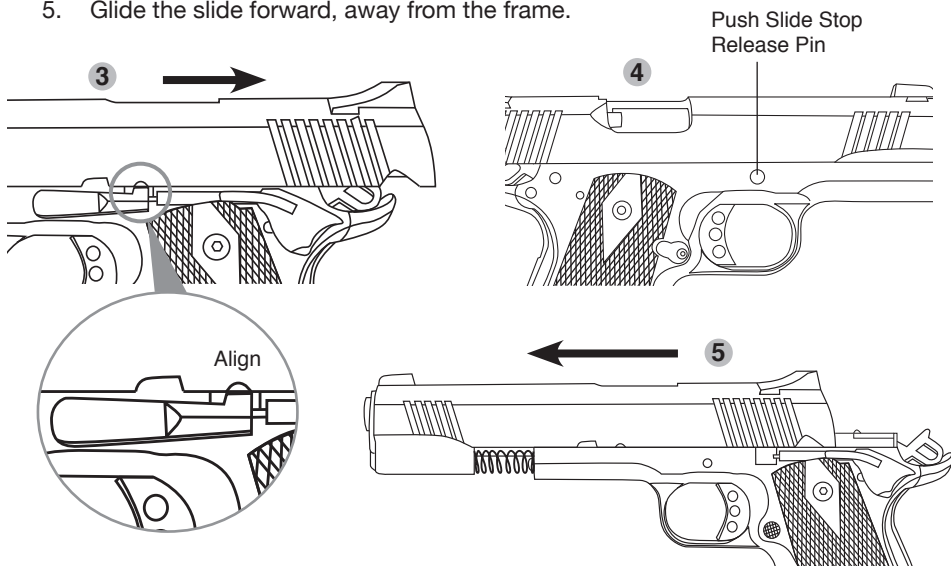
HOP-UP ADJUSTMENT POINT

BB TRAJECTORY PATTERN		ADJUSTMENTS	
	BB DROPS FREELY		TURN KNOB TO LEFT
	BB TRAVELS AT SHORT TRAJECTORY PATH		TURN KNOB SLIGHTLY TO LEFT
	BB TRAVELS DISTANCE AT FLAT TRAJECTORY PATH		NO ADJUSTMENT MADE
	BB TRAVELS FLAT IN SHORT DISTANCE, THEN GOES UP IN CURVE AND DROPS FREELY		TURN KNOB SLIGHTLY TO RIGHT
	BB TRAVELS AT UNSTABLE SPEED AND IRREGULAR PATH		TURN KNOB TO RIGHT

DISASSEMBLY

It is not recommended to disassemble the gun unless you have BBs jammed inside the barrel or for maintenance purpose only.

1. Remove magazine by depressing magazine releases on either side of Airsoft gun.
2. Check and clear the chamber of BBs.
3. Pull back the slide until small cut out slot on the slide aligns with the front end of the slide stop.
4. While holding the slide in position, remove the slide stop by pushing on the release pin on the right side of frame. Pull off the slide-stop from the left side of the frame.
5. Glide the slide forward, away from the frame.



ASSEMBLY

1. Put the slide onto the frame rails. Glide it toward the rear of the Airsoft gun until the small cut-out slot on the slide aligns with the slide stop hole.
2. While holding the slide in position, insert the slide-stop.
3. Pull the slide to the rear-most position and then release.
4. Install the magazine.

NOTE: After the slide assembly is completed, cycle the slide back and forth to insure proper assembly.

BASIC TROUBLESHOOTING GUIDE FOR PISTOL

SYMPTOMS	POSSIBLE CAUSE	SOLUTIONS
Slide jams / Will not complete cycle	Dry internal	Add silicone to cylinder / main seal/ rails
Double feeds BBs into chamber / BB's roll out of barrel	Hop-up adjustment too tight	Release hop-up or replace bucking
BBs will not release from magazine / bent mag lip/ check bb condition	Bent magazine lip	Replace magazine lip
Leaking release valve & charging valve	Dry O-ring	Add silicone oil to valves
Slide stop engages while shooting BBs	Weak slide stop spring	Adjust tension
Magazine base plate will not lock	Broken base plate lock	Replace base plate lock
Magazine base leaking air	Worn out base seal	Replace magazine base seal
Cylinder will not load BBs into chamber	Broken cylinder tap	Replace cylinder
Trigger will not reset	Worn out trigger spring / trigger bow spring	Replace trigger spring / trigger bow spring

GENERAL MAINTENANCE FOR KWA GAS BLOW BACK

Green gas is a liquid propellant which tends to dry out the seals and o-rings. With lubricating silicone oil, it will extend the life of the seals and o-rings and prevent gas leaks.

Use only the recommended 100% silicone oil, available for purchase at the Airsoft dealer where you purchased your KWA products. Any other type of lubricant may damage the products.

Lightly lubricate the recoil spring, cylinder and moving parts with a few drops of oil. Lubricating the seals and o-rings are essential. Unload BBs from the magazine. Make sure the magazine is free of gas before lubricating the magazine's charging valve and release valve.

OPERATING UNDER UNUSUAL CONDITIONS

Unusual conditions are defined as any condition requiring special maintenance. Perform maintenance outlined for the climate similar to your operational area

Extreme Cold:

Operating an Airsoft gas gun in extremely cold temperatures is not recommended. Cold temperatures will cause the Hop-up Bucking to harden, reducing its effectiveness. Gas will not expand properly in cold temperatures, so both the cycling rate and power will be dramatically reduced.

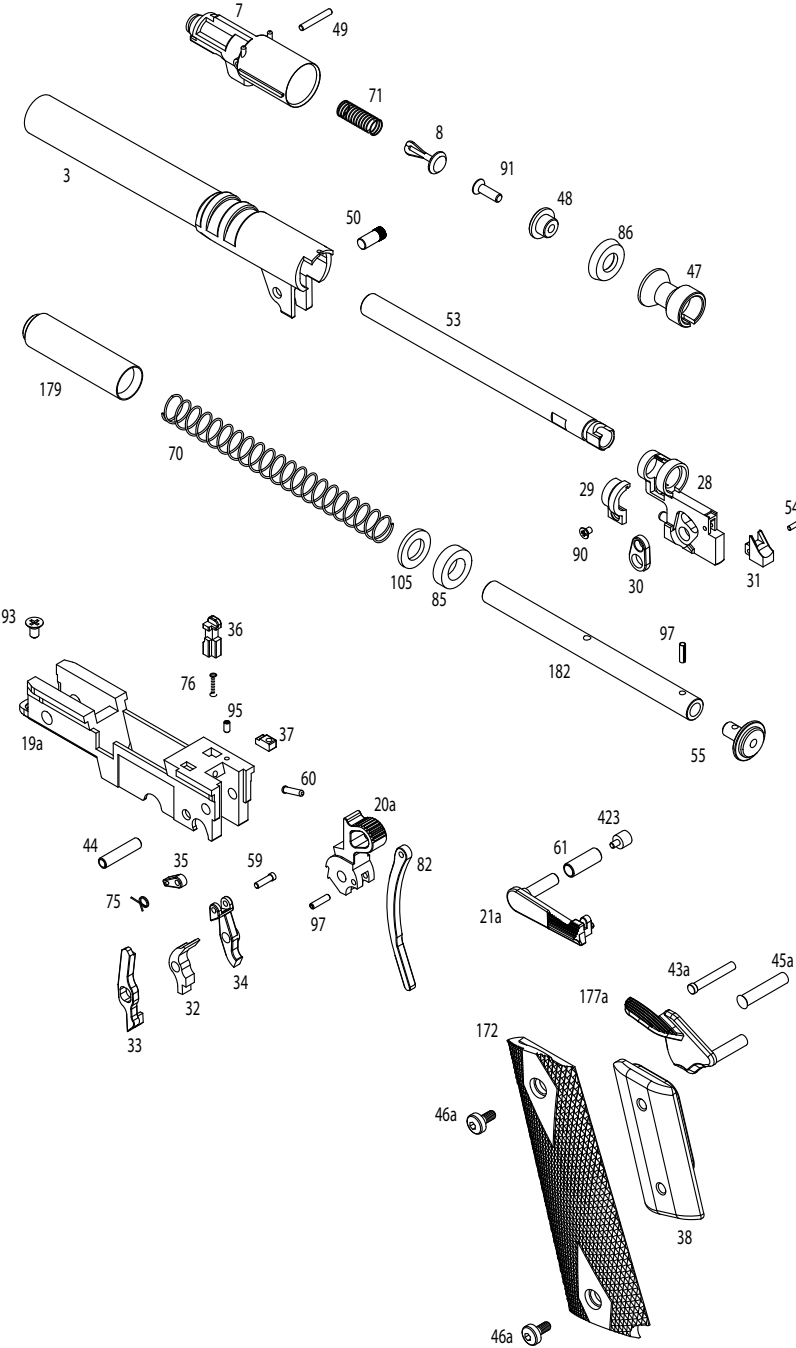
Extreme Heat:

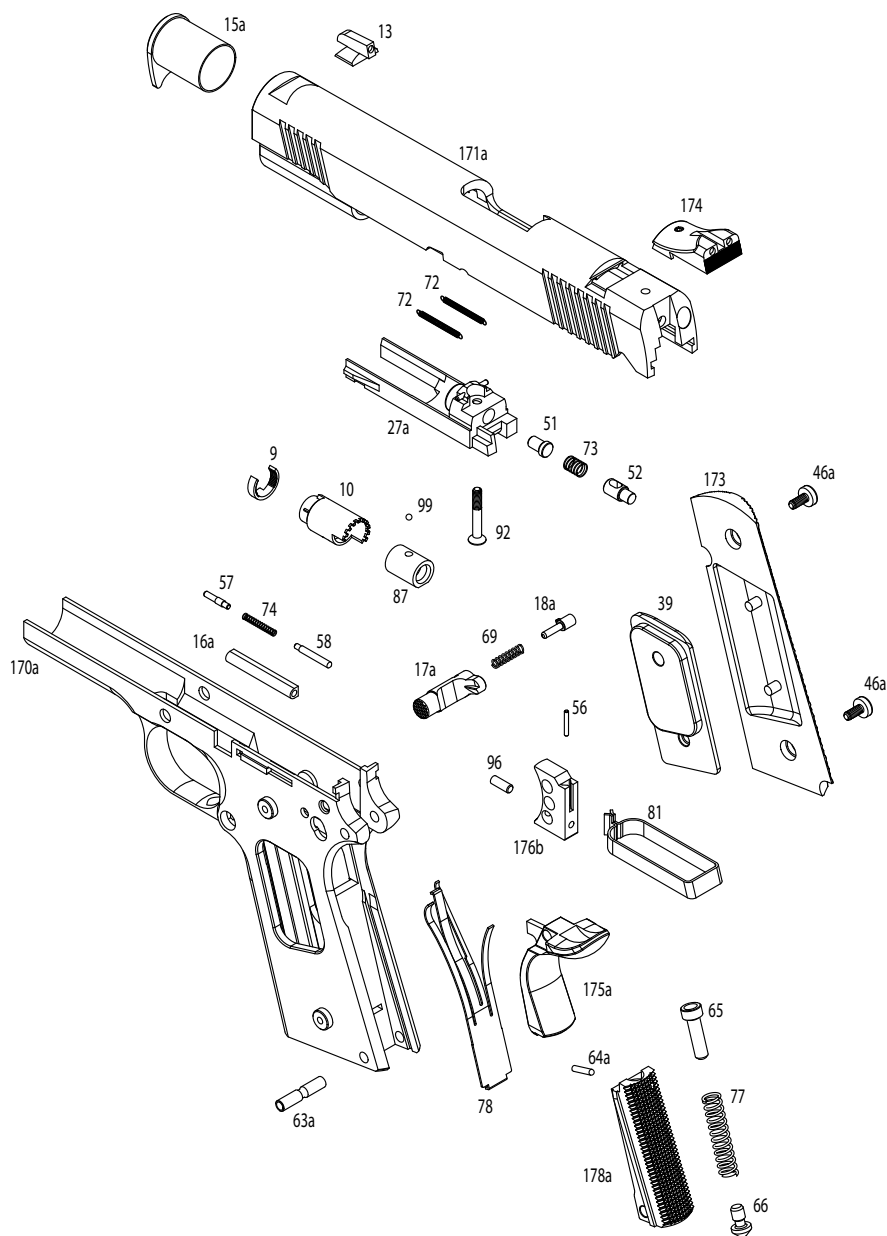
Operating an Airsoft gas gun in extremely hot temperatures is also not recommended. Leaving the gun in direct sunlight for long periods of time, or operating in extremely hot areas will cause the gas to over-expand, damaging the internal workings of the gun. The increase in internal pressure from the expanding gas can also damage the seals and cause leaks in the magazine.

Dust or Sand:

Dust or sand can get into a gas gun and cause malfunctions and/or excessive wear. Keep the gun covered whenever possible. Use lubricant sparingly, as lube naturally attracts dirt and other particles. After use in a dusty area, always field strip the gun (refer to Disassembly Section) and clean any areas you can reach with a soft, lint-free cloth.

1911 MARK I DIAGRAM

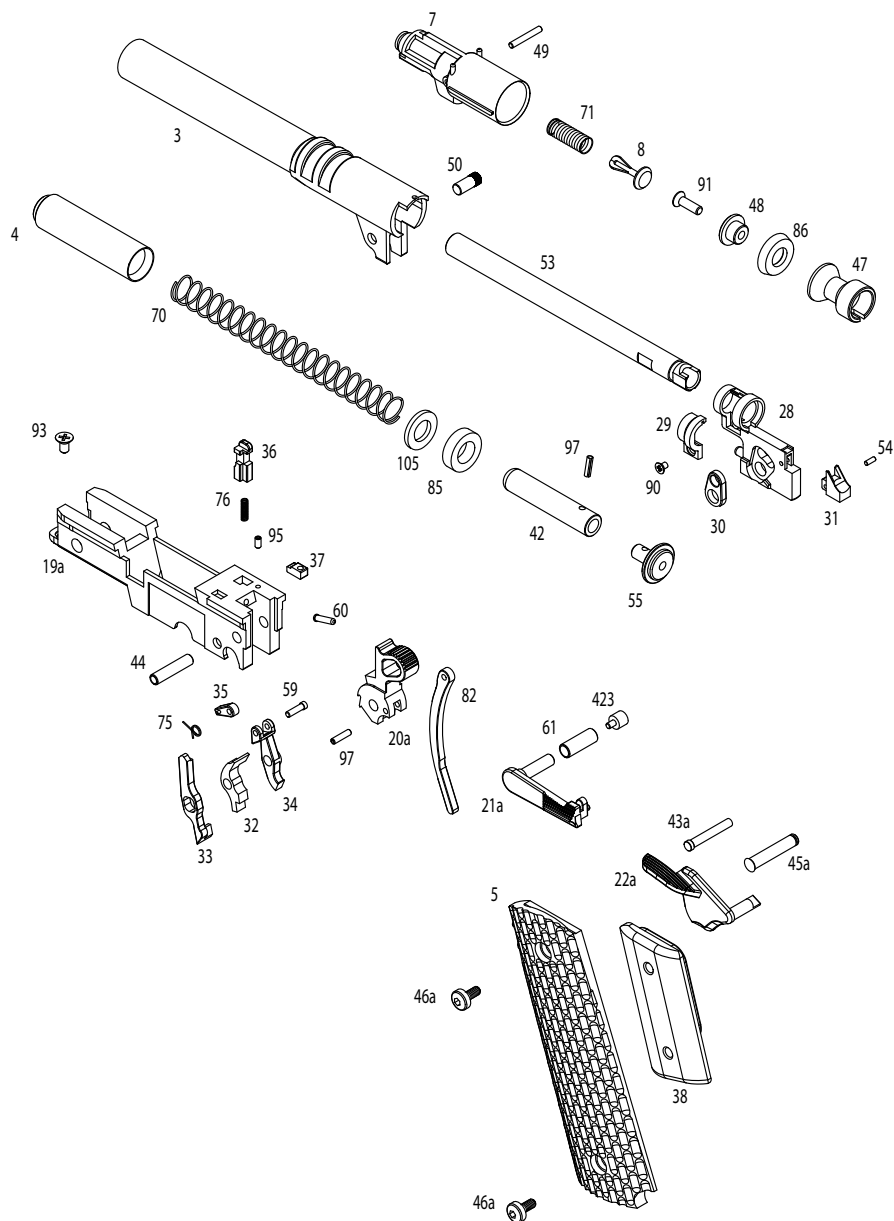




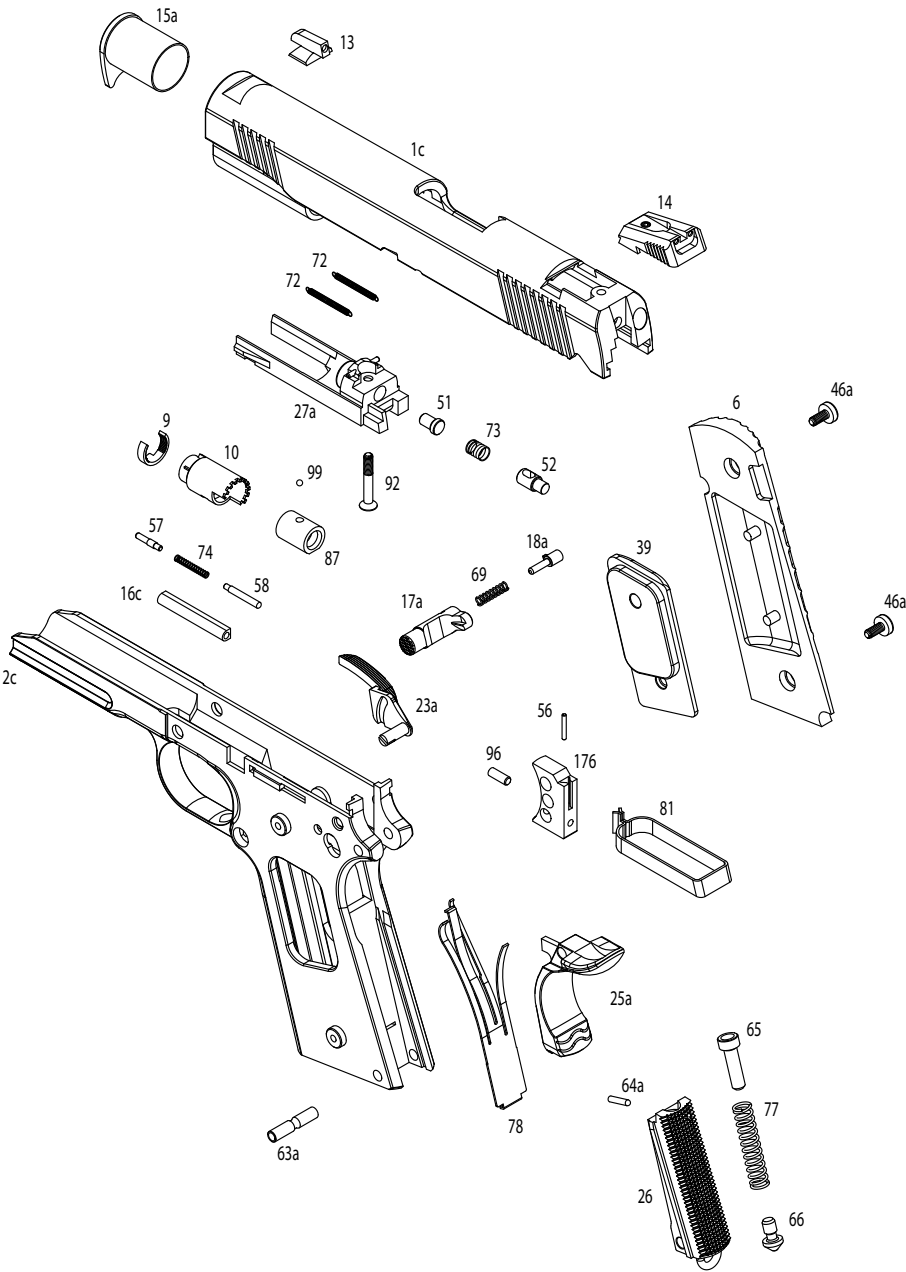
1911 MARK I PARTS LIST

Parts #	Description	Parts #	Description	Parts #	Description
199-0112-3	OUTER BARREL	199-0112-54	BB FEED RAMP PIN	199-0112-105	RECOIL BUFFER WASHER
199-0112-7	CYLINDER	199-0112-55	RECOIL SPRING GUIDE CAP	199-0112-170A	FRAME
199-0112-8	JET NOZZLE	199-0112-56	TRIGGER BOW SET PIN	199-0112-171A	SLIDE
199-0112-9	HOP-UP CYLINDER CLAMP	199-0112-57	SLIDE RELEASE LEVER	199-0112-172	GRIP (LEFT)
199-0112-10	HOP-UP CYLINDER	199-0112-58	SAFETY LEVER PLUNGER	199-0112-173	GRIP (RIGHT)
199-0112-13	FRONT SIGHT	199-0112-59	IMPACT HAMMER PIN	199-0112-174	REAR SIGHT
199-0112-15A	BARREL BUSHING	199-0112-60	IMPACT PIN	199-0112-175A	GRIP SAFETY
199-0112-16A	PLUNGER TUBE	199-0112-61	SLIDE RELEASE SLEEVE	199-0112-176B	TRIGGER
199-0112-17A	MAGAZINE CATCH	199-0112-63A	MAIN SPRING HOUSING PIN	199-0112-177A	SAFETY LEVER
199-0112-18A	MAGAZINE CATCH LOCK	199-0112-64A	MAIN SPRING RETAINER PIN	199-0112-178A	MAIN SPRING HOUSING
199-0112-19A	INNER FRAME	199-0112-65	MAIN SPRING RETAINER	199-0112-179	RECOIL PLUG
199-0112-20A	HAMMER	199-0112-66	MAIN SPRING CATCH	199-0112-182	RECOIL SPRING GUIDE
199-0112-21A	SLIDE RELEASE LEVER	199-0112-69	MAGAZINE CATCH SPRING	199-0112-423	SLIDE RELEASE CAP
199-0112-27A	BREECH BLOCK	199-0112-70	RECOIL SPRING		
199-0112-28	INNER BARREL BASE	199-0112-71	JET NOZZLE SPRING		
199-0112-29	INNER BARREL LOCK	199-0112-72	CYLINDER SPRINGS X 2		
199-0112-30	BARREL LINK	199-0112-73	FIRING PIN SPRING		
199-0112-31	BB FEED RAMP	199-0112-74	PLUNGER SPRING		
199-0112-32	SEAR	199-0112-75	IMPACT HAMMER SPRING		
199-0112-33	DISCONNECTOR	199-0112-76	IMPACT HAMMER LOCK SPRING		
199-0112-34	IMPACT FRAME	199-0112-77	MAIN SPRING		
199-0112-35	IMPACT HAMMER	199-0112-78	SEAR SPRING		
199-0112-36	IMPACT HAMMER LOCK	199-0112-81	TRIGGER BOW		
199-0112-37	STOPPER	199-0112-82	HAMMER STRUT		
199-0112-38	GRIP WEIGHT (LEFT)	199-0112-85	RECOIL BUFFER		
199-0112-39	GRIP WEIGHT (RIGHT)	199-0112-86	MAIN SEAL		
199-0112-43A	SEAR PIN	199-0112-87	HOP-UP BUCKING		
199-0112-44	SEAR SLEEVE	199-0112-90	INNER BARREL LOCK SCREW		
199-0112-45A	HAMMER PIN	199-0112-91	MAIN SEAL CAP SCREW		
199-0112-46A	GRIP SCREWS X 4	199-0112-92	BREECH SCREW		
199-0112-47	MAIN SEAL BASE	199-0112-93	INNER FRAME SCREW		
199-0112-48	MAIN SEAL CAP	199-0112-95	STOPPER SCREW		
199-0112-49	CYLINDER PIN	199-0112-96	TRIGGER SCREW		
199-0112-50	BARREL LINK PIN	199-0112-97	ROLL PINS X 2		
199-0112-51	MAIN SEAL BASE SCREW	199-0112-99	HOP-UP BALL		
199-0112-52	FIRING PIN				
199-0112-53	INNER BARREL				

1911 MARK II PARTS DIAGRAM



1911 MARK II PARTS DIAGRAM



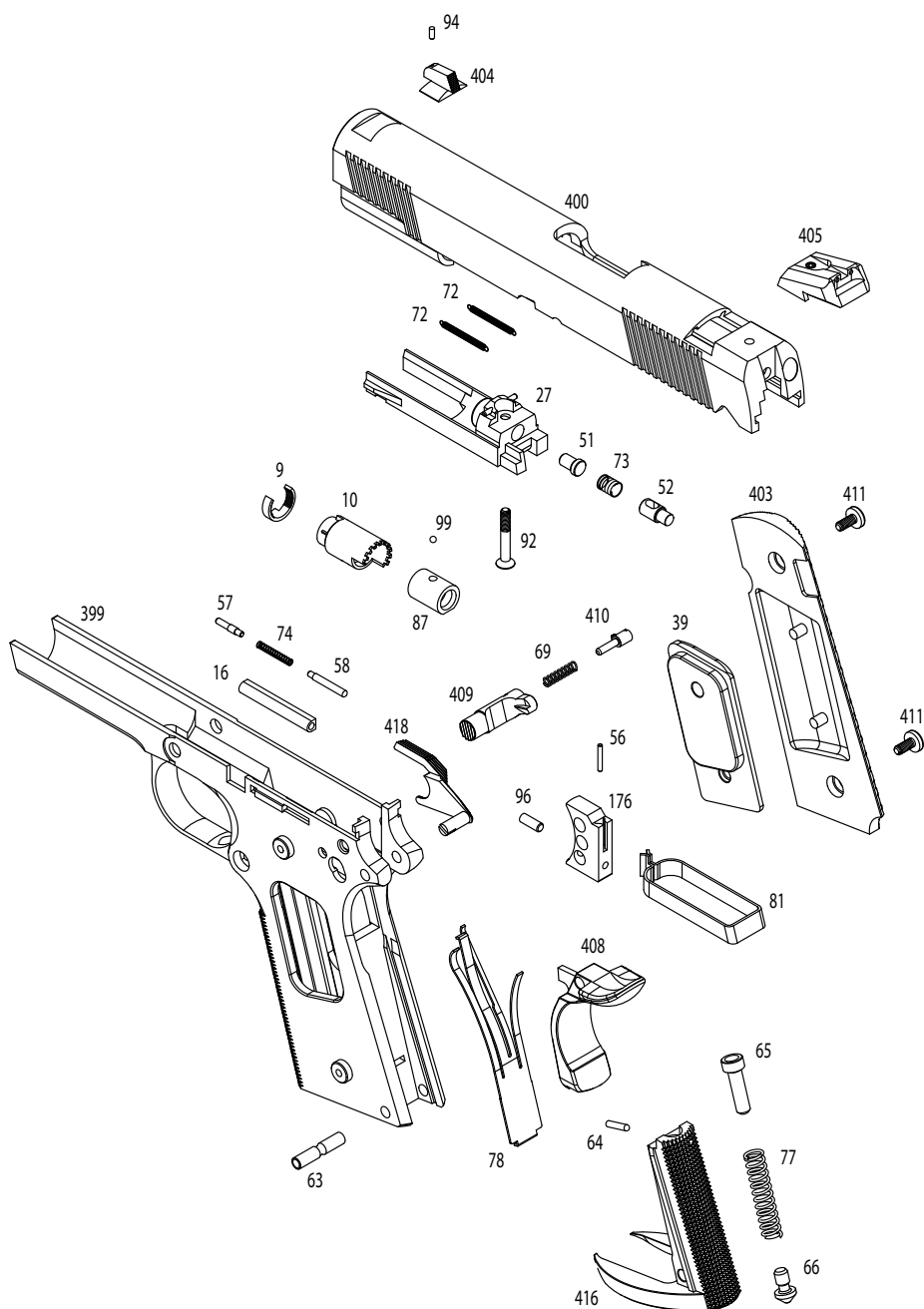
1911 MARK II PARTS LIST

Parts #	Description
199-0112-1C	SLIDE
199-0112-2C	MAIN FRAME
199-0112-3	OUTER BARREL
199-0112-4	FLAT RECOIL PLUG
199-0112-5	GRIP (LEFT)
199-0112-6	GRIP (RIGHT)
199-0112-7	CYLINDER
199-0112-8	JET NOZZLE
199-0112-9	HOP-UP CYLINDER CLAMP
199-0112-10	HOP-UP CYLINDER
199-0112-13	FRONT SIGHT
199-0112-14	REAR SIGHT
199-0112-15A	BARREL BUSHING
199-0112-16C	PLUNGER TUBE
199-0112-17A	MAGAZINE CATCH
199-0112-18A	MAGAZINE CATCH LOCK
199-0112-19A	INNER FRAME
199-0112-20A	HAMMER
199-0112-21A	SLIDE RELEASE LEVER
199-0112-22A	SAFETY LEVER (LEFT)
199-0112-23A	SAFETY LEVER (RIGHT)
199-0112-25A	GRIP SAFETY A
199-0112-26	MAIN SPRING HOUSING
199-0112-27A	BREECH BLOCK
199-0112-28	INNER BARREL BASE
199-0112-29	INNER BARREL LOCK
199-0112-30	BARREL LINK
199-0112-31	BB FEED RAMP
199-0112-32	SEAR
199-0112-33	DISCONNECTOR
199-0112-34	IMPACT FRAME
199-0112-35	IMPACT HAMMER
199-0112-36	IMPACT HAMMER LOCK
199-0112-37	STOPPER
199-0112-38	GRIP WEIGHT (LEFT)
199-0112-39	GRIP WEIGHT (RIGHT)
199-0112-42	RECOIL SPRING GUIDE

Parts #	Description
199-0112-43A	SEAR PIN
199-0112-44	SEAR SLEEVE
199-0112-45A	HAMMER PIN
199-0112-46A	GRIP SCREWS X 4
199-0112-47	MAIN SEAL BASE
199-0112-48	MAIN SEAL CAP
199-0112-49	CYLINDER PIN
199-0112-50	BARREL LINK PIN
199-0112-51	MAIN SEAL BASE SCREW
199-0112-52	FIRING PIN
199-0112-53	INNER BARREL
199-0112-54	BB FEED RAMP PIN
199-0112-55	RECOIL SPRING GUIDE CAP
199-0112-56	TRIGGER BOW SET PIN
199-0112-57	SLIDE RELEASE LEVER
199-0112-58	SAFETY LEVER PLUNGER
199-0112-59	IMPACT HAMMER PIN
199-0112-60	IMPACT PIN
199-0112-61	SLIDE RELEASE SLEEVE
199-0112-63A	MAIN SPRING HOUSING PIN
199-0112-64A	MAIN SPRING RETAINER PIN
199-0112-65	MAIN SPRING RETAINER
199-0112-66	MAIN SPRING CATCH
199-0112-69	MAGAZINE CATCH SPRING
199-0112-70	RECOIL SPRING
199-0112-71	JET NOZZLE SPRING
199-0112-72	CYLINDER SPRINGS X 2
199-0112-73	FIRING PIN SPRING
199-0112-74	PLUNGER SPRING
199-0112-75	IMPACT HAMMER SPRING
199-0112-76	IMPACT HAMMER LOCK SPRING
199-0112-77	MAIN SPRING
199-0112-78	SEAR SPRING
199-0112-81	TRIGGER BOW
199-0112-82	HAMMER STRUT

Parts #	Description
199-0112-85	RECOIL BUFFER
199-0112-86	MAIN SEAL
199-0112-87	HOP-UP BUCKING
199-0112-90	INNER BARREL LOCK SCREW
199-0112-91	MAIN SEAL CAP SCREW
199-0112-92	BREECH SCREW
199-0112-93	INNER FRAME SCREW
199-0112-95	STOPPER SCREW
199-0112-96	TRIGGER SCREW
199-0112-97	ROLL PINS X 2
199-0112-99	HOP-UP BALL
199-0112-105	RECOIL BUFFER WASHER
199-0112-176	TRIGGER
199-0112-423	SLIDE RELEASE CAP

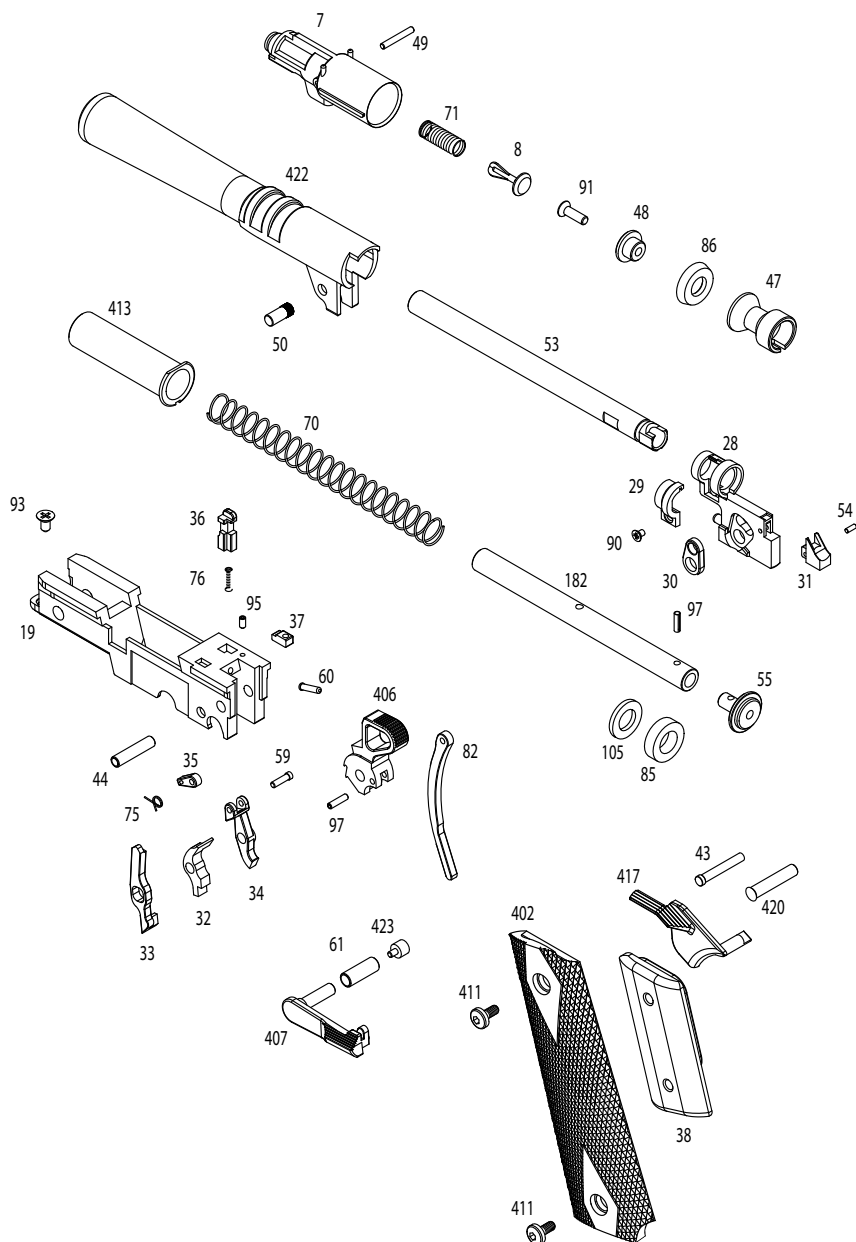




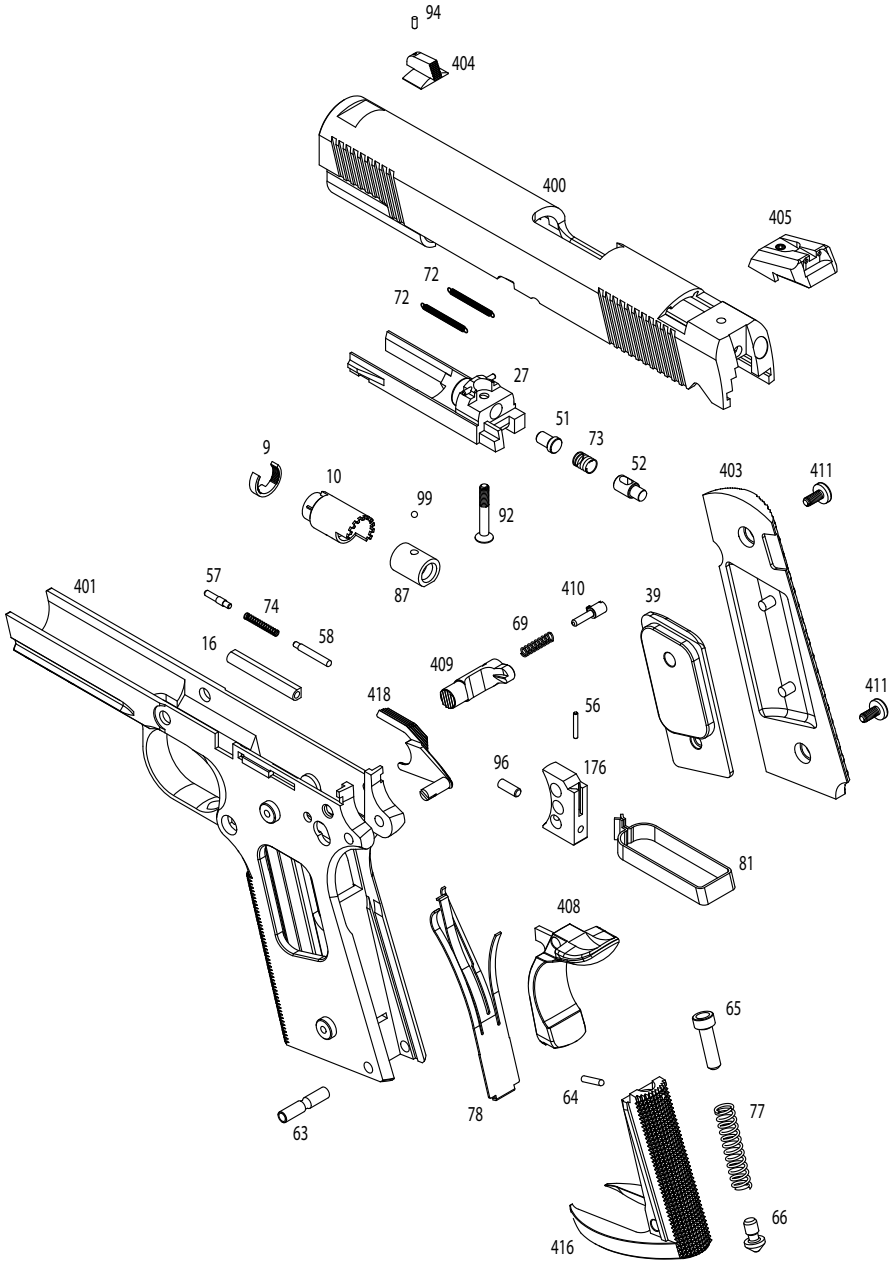
1911 MARK III PARTS LIST

Parts #	Description	Parts #	Description	Parts #	Description
199-0112-7	CYLINDER	199-0112-63	MAIN SPRING HOUSING PIN	199-0112-404	FRONT SIGHT
199-0112-8	JET NOZZLE	199-0112-64	MAIN SPRING RETAINER PIN	199-0112-405	REAR SIGHT
199-0112-9	HOP-UP CYLINDER CLAMP	199-0112-65	MAIN SPRING RETAINER	199-0112-406	DELTA HAMMER
199-0112-10	HOP-UP CYLINDER	199-0112-66	MAIN SPRING CATCH	199-0112-407	SLIDE RELEASE LEVER
199-0112-16	PLUNGER TUBE	199-0112-69	MAGAZINE CATCH SPRING	199-0112-408	GRIP SAFETY
199-0112-19	INNER FRAME	199-0112-70	RECOIL SPRING	199-0112-409	MAGAZINE CATCH
199-0112-27	BREECH BLOCK	199-0112-71	JET NOZZLE SPRING	199-0112-410	MAGAZINE CATCH LOCK
199-0112-28	INNER BARREL BASE	199-0112-72	CYLINDER SPRINGS X 2	199-0112-411	GRIP SCREWS X 4
199-0112-29	INNER BARREL LOCK	199-0112-73	FIRING PIN SPRING	199-0112-413	RECOIL PLUG
199-0112-30	BARREL LINK	199-0112-74	PLUNGER SPRING	199-0112-416	MAIN SPRING HOUSING
199-0112-31	BB FEED RAMP	199-0112-75	IMPACT HAMMER SPRING	199-0112-417	SAFETY LEVER (LEFT)
199-0112-32	SEAR	199-0112-76	IMPACT HAMMER LOCK SPRING	199-0112-418	SAFETY LEVER (RIGHT)
199-0112-33	DISCONNECTOR	199-0112-77	MAIN SPRING	199-0112-420	HAMMER PIN
199-0112-34	IMPACT FRAME	199-0112-78	SEAR SPRING	199-0112-422	OUTER BARREL
199-0112-35	IMPACT HAMMER	199-0112-81	TRIGGER BOW	199-0112-423	SLIDE RELEASE CAP
199-0112-36	IMPACT HAMMER LOCK	199-0112-82	HAMMER STRUT		
199-0112-37	STOPPER	199-0112-85	RECOIL BUFFER		
199-0112-38	GRIP WEIGHT (LEFT)	199-0112-86	MAIN SEAL		
199-0112-39	GRIP WEIGHT (RIGHT)	199-0112-87	HOP-UP BUCKING		
199-0112-43	SEAR PIN	199-0112-90	INNER BARREL LOCK SCREW		
199-0112-44	SEAR SLEEVE	199-0112-91	MAIN SEAL CAP SCREW		
199-0112-47	MAIN SEAL BASE	199-0112-92	BREECH SCREW		
199-0112-48	MAIN SEAL CAP	199-0112-93	INNER FRAME SCREW		
199-0112-49	CYLINDER PIN	199-0112-94	FRONT SIGHT SCREW		
199-0112-50	BARREL LINK PIN	199-0112-95	STOPPER SCREW		
199-0112-51	MAIN SEAL BASE SCREW	199-0112-96	TRIGGER SCREW		
199-0112-52	FIRING PIN	199-0112-97	ROLL PINS X 2		
199-0112-53	INNER BARREL	199-0112-99	HOP-UP BALL		
199-0112-54	BB FEED RAMP PIN	199-0112-105	RECOIL BUFFER WASHER		
199-0112-55	RECOIL SPRING GUIDE CAP	199-0112-176	TRIGGER		
199-0112-56	TRIGGER BOW SET PIN	199-0112-182	RECOIL SPRING GUIDE		
199-0112-57	SLIDE RELEASE LEVER	199-0112-399	FRAME		
199-0112-58	SAFETY LEVER PLUNGER	199-0112-400	SLIDE		
199-0112-59	IMPACT HAMMER PIN	199-0112-402	GRIP (LEFT)		
199-0112-60	IMPACT PIN	199-0112-403	GRIP (RIGHT)		
199-0112-61	SLIDE RELEASE SLEEVE				

1911 MARK IV PARTS DIAGRAM



1911 MARK IV PARTS DIAGRAM



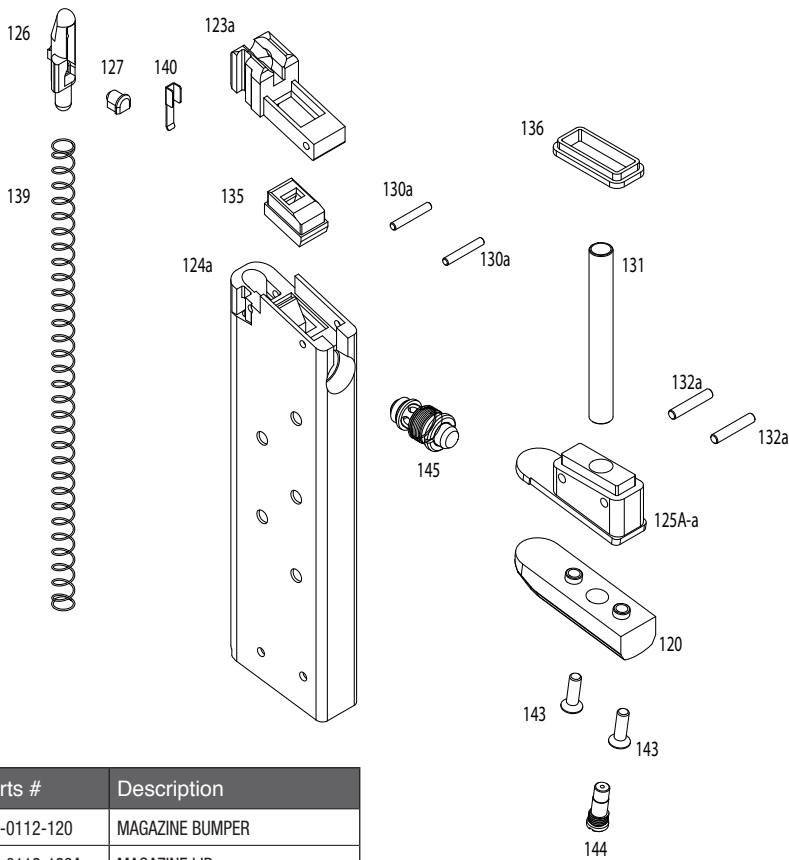
1911 MARK IV PARTS LIST

Parts #	Description
199-0112-7	CYLINDER
199-0112-8	JET NOZZLE
199-0112-9	HOP-UP CYLINDER CLAMP
199-0112-10	HOP-UP CYLINDER
199-0112-16	PLUNGER TUBE
199-0112-19	INNER FRAME
199-0112-27	BREECH BLOCK
199-0112-28	INNER BARREL BASE
199-0112-29	INNER BARREL LOCK
199-0112-30	BARREL LINK
199-0112-31	BB FEED RAMP
199-0112-32	SEAR
199-0112-33	DISCONNECTOR
199-0112-34	IMPACT FRAME
199-0112-35	IMPACT HAMMER
199-0112-36	IMPACT HAMMER LOCK
199-0112-37	STOPPER
199-0112-38	GRIP WEIGHT (LEFT)
199-0112-39	GRIP WEIGHT (RIGHT)
199-0112-43	SEAR PIN
199-0112-44	SEAR SLEEVE
199-0112-47	MAIN SEAL BASE
199-0112-48	MAIN SEAL CAP
199-0112-49	CYLINDER PIN
199-0112-50	BARREL LINK PIN
199-0112-51	MAIN SEAL BASE SCREW
199-0112-52	FIRING PIN
199-0112-53	INNER BARREL
199-0112-54	BB FEED RAMP PIN
199-0112-55	RECOIL SPRING GUIDE CAP
199-0112-56	TRIGGER BOW SET PIN
199-0112-57	SLIDE RELEASE LEVER
199-0112-58	SAFETY LEVER PLUNGER
199-0112-59	IMPACT HAMMER PIN
199-0112-60	IMPACT PIN
199-0112-61	SLIDE RELEASE SLEEVE

Parts #	Description
199-0112-63	MAIN SPRING HOUSING PIN
199-0112-64	MAIN SPRING RETAINER PIN
199-0112-65	MAIN SPRING RETAINER
199-0112-66	MAIN SPRING CATCH
199-0112-69	MAGAZINE CATCH SPRING
199-0112-70	RECOIL SPRING
199-0112-71	JET NOZZLE SPRING
199-0112-72	CYLINDER SPRINGS X 2
199-0112-73	FIRING PIN SPRING
199-0112-74	PLUNGER SPRING
199-0112-75	IMPACT HAMMER SPRING
199-0112-76	IMPACT HAMMER LOCK SPRING
199-0112-77	MAIN SPRING
199-0112-78	SEAR SPRING
199-0112-81	TRIGGER BOW
199-0112-82	HAMMER STRUT
199-0112-85	RECOIL BUFFER
199-0112-86	MAIN SEAL
199-0112-87	HOP-UP BUCKING
199-0112-90	INNER BARREL LOCK SCREW
199-0112-91	MAIN SEAL CAP SCREW
199-0112-92	BREECH SCREW
199-0112-93	INNER FRAME SCREW
199-0112-94	FRONT SIGHT SCREW
199-0112-95	STOPPER SCREW
199-0112-96	TRIGGER SCREW
199-0112-97	ROLL PINS X 2
199-0112-99	HOP-UP BALL
199-0112-105	RECOIL BUFFER WASHER
199-0112-176	TRIGGER
199-0112-182	RECOIL SPRING GUIDE
199-0112-400	SLIDE
199-0112-401	RAIL FRAME
199-0112-402	GRIP (LEFT)
199-0112-403	GRIP (RIGHT)

Parts #	Description
199-0112-404	FRONT SIGHT
199-0112-405	REAR SIGHT
199-0112-406	DELTA HAMMER
199-0112-407	SLIDE RELEASE LEVER
199-0112-408	GRIP SAFETY
199-0112-409	MAGAZINE CATCH
199-0112-410	MAGAZINE CATCH LOCK
199-0112-411	GRIP SCREWS X 4
199-0112-413	RECOIL PLUG
199-0112-416	MAIN SPRING HOUSING
199-0112-417	SAFETY LEVER (LEFT)
199-0112-418	SAFETY LEVER (RIGHT)
199-0112-420	HAMMER PIN
199-0112-422	OUTER BARREL
199-0112-423	SLIDE RELEASE CAP

1911 MARK SERIES MAGAZINE DIAGRAM AND PARTS LIST



Parts #	Description
199-0112-120	MAGAZINE BUMPER
199-0112-123A	MAGAZINE LIP
199-0112-124A	MAGAZINE CASE
199-0112-125A-A	MAGAZINE BASE
199-0112-126	MAGAZINE FOLLOWER
199-0112-127	MAGAZINE FOLLOWER LOCK
199-0112-130A	MAGAZINE LIP PINS X 2
199-0112-131	MAGAZINE EXPANSION TUBE
199-0112-132A	MAGAZINE BASE PINS X 2
199-0112-135	MAGAZINE NOZZLE SEAL
199-0112-136	MAGAZINE SEAL
199-0112-139	MAGAZINE FOLLOWER SPRING
199-0112-140	MAGAZINE FOLLWER LOCK SPRING
199-0112-143	MAGAZINE BUMPER SCREWS X 2
199-0112-144	MAGAZINE CHARGING VALVE
199-0112-145	MAGAZINE RELEASE VALVE

KWA Performance Industries, Inc.

18571 E. Gale Ave

City of Industry, CA 91748

T: 626.581.1777 • F: 626.581.0777

www.kwausa.com

