



SERIES 92 MANUAL

WARNING: BEFORE USAGE, THE INSTRUCTION MUSE BE READ.

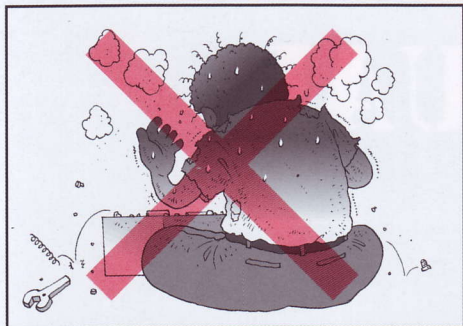
THANK YOU FOR PURCHASING. THE FOLLOWING ATTENTION POINTS AND INSTRUCTIONS MUST BE READ. SHOOTING WITHOUT CAUTION OR USED IMPROPERLY, BLINDNESS OR INJURIES COULD BE LEAD.



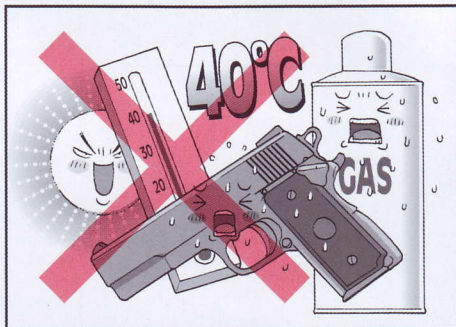
DO NOT POINT AT PEOPLE OR ANIMAL.



PLACE IN GUN CASE WHEN NOT IN USING OR TRANSPORTING



UNAUTHORIZED RECONSTRUCTION OF AIR SOFT GUN TO STRENGTHEN FIRING FUNCTION IS STRICTLY PROHIBITED.



GUN AND GAS MUST BE PLACED IN AREA WHERE TEMPERATURE IS OVER 40 °C



DO NOT USE GAS WHICH PRESSURE OVER 12 Kgs/cm²



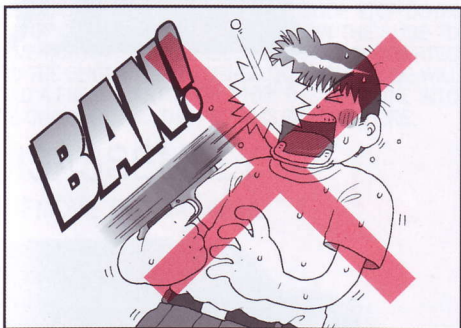
BE CAREFULL WHAT TARGET YOU SHOOT



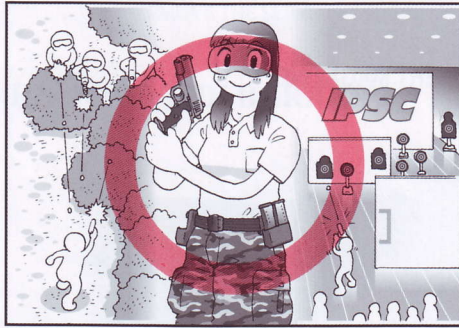
EYE PROTECTION DEVICE MUST BE EQUIPPED



DO NOT LOAD ANYTHING BUT BB BULLETS.



DO NOT LOOK THROUGH THE BARREL



PLEASE SHOOT IN SAFE PLACE

ORPATION

1.REMOVE THE MAGAZINE



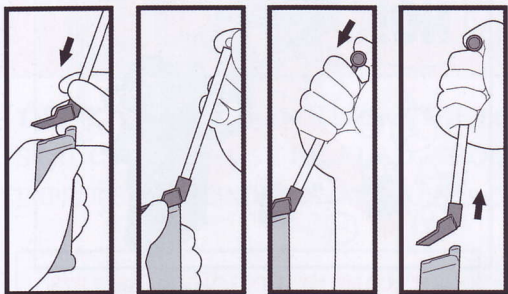
PRESS MAGAZINE CATCH AND REMOVE MAGAZINE

2.FILLING GAS



FILL THE GAS BOTTLE TO THE MAGAZINE IN VERTICAL DIRECTION.

3.LOAD BB BULLETS



4.INSERT MAGAZINE



5.LOAD



PULL THE SLIDE COMPLETELY TO THE REAR.

6.SAFETY



SAFETY OFF.



SAFETY ON.

7.FIRE



PULL THE TRIGGER.



AFTER THE LAST SHOT IS FIRED, SLIDE WILL STOP IN THE REAR . CHECK THE CHAMBER AND MAKE SURE THE CHAMBER IS EMPTY.PRESS THE SLIDE STOP DOWN OUT OF ITS LOCKING NOTCH TO ALLOW THE SLIDE TO MOVE FORWARD.IF A LOADED MAGAZINE IS INSERTED AND THE SLIDE STOP IS PUSHED DOWN,THE SLIDE WILL LOAD A FRESH CARTRIDGE FROM THE MAGAZINE INTO THE CHAMBER, AND THE PISTOL IS READY TO FIRE.

DISASSEMBLY

1.REMOVE THE MAGAZINE



PRESS MAGAZINE CATCH AND REMOVE MAGAZINE.

2.REMOVE THE SLIDE

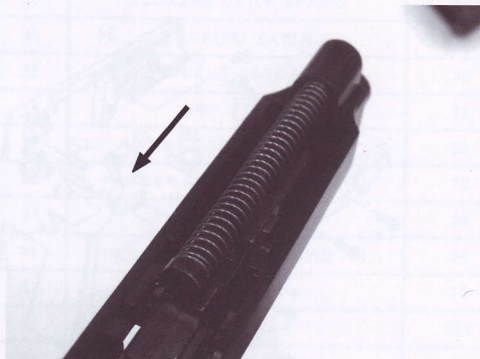


PRESS THE DISASSEMBLY LATCH RELEASE AND ROTATE THE DISASSEMBLY LATCH CLOCKWISE UNTIL IT STOPS.



REMOVE THE SLIDE.

3.REMOVE THE BARREL



REMOVE THE RECOIL SPRING GUIDE AND SPRING.

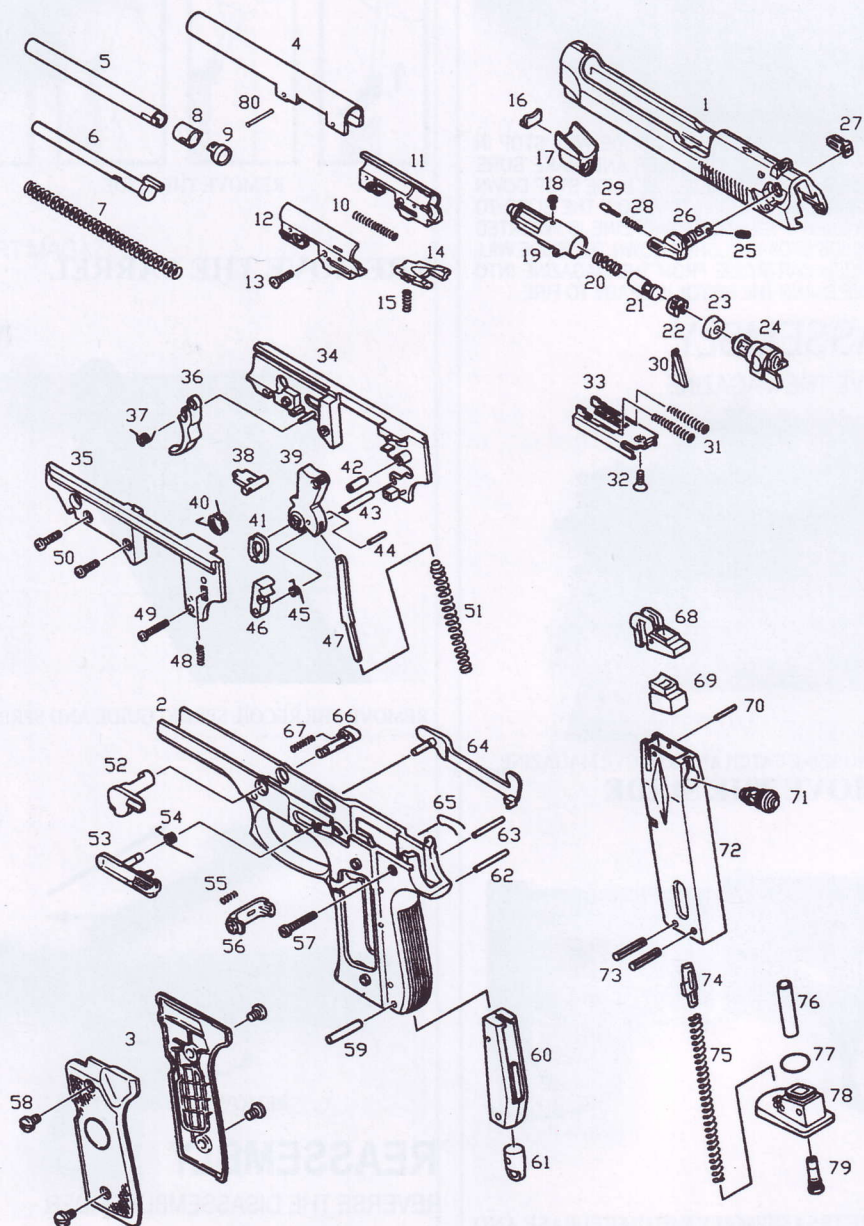


REMOVE THE BARREL.

REASSEMBLY

REVERSE THE DISASSEMBLY ORDER

EXPLODED DRAWING

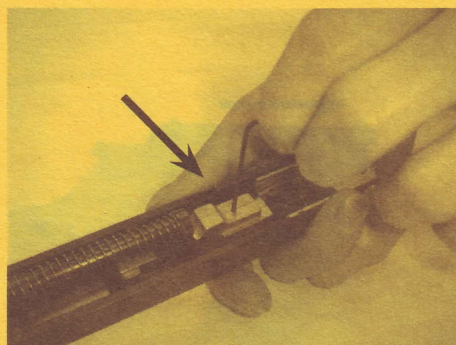


NO.	NAME	PRICE	NO.	NAME	PRICE
1	SLIDE(PLASTIC)	400	42	HAMMER COLLAR	25
2	FRAME(PLASTIC)	500	43	SEAR COLLAR	20
3	GRIP(LEFT,RIGHT)	150	44	HAMMER STURT PIN	10
4	OUTTER BARREL(PLASTIC)	150	45	SEAR SPRING	25
5	INNER BARREL	120	46	SEAR	50
6	RECOIL SPRING GUIDE	100	47	HAMMER STURT	50
7	RECOIL SPRING	50	48	KNOCKER LOCKI PLATE SPRING	10
8	CHAMBER CASE	20	49	MAIN CHASSIS SCREW(SMALL)	10
9	RUBBER CHAMBER	30	50	MAIN CHASSIS SCREW(LARGE)	15
10	BARREL CASE SPRING	10	51	HAMMER STURT SPRING	40
11	BARREL CASE (RIGHT)	100	52	DISASSEMBLING LATCH	80
12	BARREL CASE (LEFT)	100	53	SLIDE STOP	100
13	BARREL CASE SCREW	10	54	SLIDE STOP SPRING	30
14	LOCKING BLOCK	30	55	MAGAZINE CATCH SPRING	10
15	LOCKING BLOCK SPRING	10	56	MAGAZINE CATCH	30
16	SLIDE PART A	10	57	FRAME SCREW	30
17	SLIDE PART B	50	58	GRIP SCREW	25
18	CYLINDER SCRERW	10	59	HAMMER SPRING CAP PIN	30
19	CYLINDER	150	60	HAMMER SPRING HOUSING(R,L)	70
20	CYLINDER SPRING	20	61	HAMMER SPRING CAP	30
21	CYLINDER VALVE	20	62	HAMMER SPRING HOUSING PIN	20
22	CYLINDER VALVE STOP	20	63	SEAR PIN	20
23	PISTON CAP	50	64	TRIGGER BAR	120
24	PISTON	200	65	TRIGGER BAR SPRING	30
25	SAFETY SCREW	10	66	DISASSEMBLING LATCH RELEASE BUTTON	60
26	SAFETY(LEFT)	100	67	DISASSEMBLING LATCH RELEASE BUTTON SP.	10
27	SAFETY(RIGHT)	50	68	BB BULLET LIP	50
28	SAFETYCLIP SPRING	10	69	MAGAZINE GASKET	60
29	SAFETY CLIP PIN	10	70	BB BULLET LIP PIN	30
30	SAFETY ROD	20	71	EXHAUST VALVE	120
31	CYLINDER RETURN SPRING	20	72	MAGAZINE CASE	400
32	PISTON SCREW	10	73	MAGAZINE BOTTON PIN	15
33	SLIDE RAIL	200	74	FOLLOWER	30
34	MAIN CHASSIS(RIGHT)	200	75	MAGAZINE SPRING	40
35	MAIN CHASSIS(LEFT)	200	76	REGULATOR PIPE	30
36	TRIGGER	100	77	MAGAZINE BOTTON O-RING	20
37	TRIGGER SPRING	20	78	MAGAZINE BOTTON	160
38	VALVE KNOCKER	50	79	FILLING VALVE	50
39	HAMMER	100	80	BARREL PIN	10
40	VALVE KNOCKER SPRING	25			
41	KNOCKER LOCK PLATE	35			

ADJUST TRAJECTORY



1.REMOVE THE MAGAZINE AND SLIDE.



2.USE 1.5mm HEX WRENCH TO ADJUST TRAJECTORY.

STAY

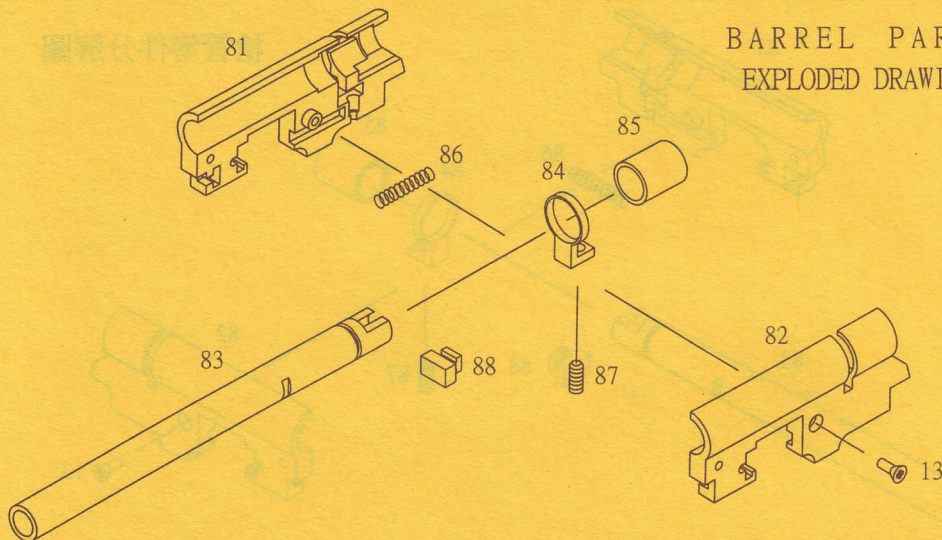


ADJUST SCREW ANTICLOCKWISE

WARNING: EACH ADJUSTMENT DO NOT OVER A QUARTER TURN.



ADJUST SCREW CLOCKWISE



BARREL PARTS
EXPLODED DRAWING

NO.	NAME	PRICE	NO.	NAME	PRICE
13	CHAMBER CASE SCREW	10	85	RUBBER CHAMBER	80
81	CHAMBER CASE (RIGHR)	100	86	BARREL CASE SPRING	10
82	CHAMBER CASE (LEFT)	100	87	ADJUDT SCREW	25
83	INNER BARREL	120	88	BUFFER	50
84	ADJUST RING	40			

KJWORKS